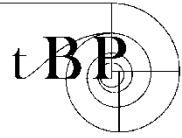


MEETING NOTES

tBP/Architecture
1777 Oakland Boulevard, Suite 320
Walnut Creek, CA 94596
925-246-6419



Architecture
Planning
Interiors
Management

PROJECT

Facilities Master Plan Update
College of the Redwoods, Redwoods CCD
7351 Tompkins Hill Road
Eureka, CA 95501

Student Listening with ASCR Senate
Interview about Information Technology
Date: April 11, 2022

Present

Jack Hill, ASCR President
Sharon Diaz, ASCR Representative to Facilities Planning Committee
Gavin Olson, Student, Del Norte Campus
Winnifred Carpenter, Student Senator, Klamath-Trinity Campus
Mason Koski, Student Senator, Eureka Campus
Morgan Beebe, ASCR Student Senator, Eureka Campus
Gary Sokolow, Faculty Advisor
Gary Moon, tB/Architecture
Amy Jane Frater, tBP/Architecture

PURPOSE OF MEETING

To discuss Student Needs & Facilities, and to prepare for the Student Survey.

DISCUSSION

GOALS, THEMES, AND CAMPUS VOICES

The group reviewed project information developed by the Facilities Planning Committee, including Goals, Planning Themes, and comments from College participants in the kick-off interviews.

Campus Voices – Kickoff Interviews

The group reviewed comments by CR administrators, faculty and staff were asked for their input about the needs for facilities improvements to support student success, the College mission, and instructional and service programs. They provided much information about classrooms, labs, offices and support spaces. They also commented on issues that impact students' needs and success outside of class time. We call this "Student Life." Example issues include:

- Lack of hang-out space
- Need space for hand-on learning
- Better WiFi.
- Lack of communal spaces
- No heart of campus activity
- Need better space to collaborate with faculty & staff
- Need spaces for online participation
- Need space to collaborate with educational partners
- CR is a role model for sustainability.

These comments are from non-students; they are shared with this group to start our discussion.

LISTENING: STUDENT VOICES

Questions

In this Listening Session, the FMP Team needs insight from the group about students' perspectives about how the campuses impact the quality of their Student Life outside of class time. Questions include:

- What do you spend time doing on campus outside of class time?
- Where do you do these activities? What facilities work, what doesn't?
- What facility is missing that would enhance your learning experience at CR?
- How does the weather impact your on-campus experience?

Winnifred Carpenter (KT)

- We have on open space on our campus, but nothing is going on, no events.

Sharon Diaz – Eureka

- Beautiful CR - I love CR. It is beautiful here.
- Better WiFi - We need better WiFi! Access is so spotty on the campus.
- Comfortable Student Spaces - We need more comfortable spaces for hanging out, fun, events, interact, study. We have spaces, but many don't work well.
- Library – it is hard to work in groups and be quiet at the same time. Group study spaces are too small; there are not enough spaces; they are not available. Also, we need spaces for student meetings and club meetings.
- Dorms – I live on campus. We need more dorm rooms. This will bring more people to the College. Especially with football coming back, we need dorms for student athletes. Many students need to live on campus. For some people, if they can't live on campus, or can't afford transportation & off-campus housing, they can't come to CR. It's better to live on campus.

- Limited Library Hours - Study spaces in library only open Monday – Friday, not weekends. Need weekend study space! Social space! Uncomfortable to study in dorms. Can't concentrate. Chat with roommate, phone, etc, distractions. It's really complicated to do homework done on the weekend. The College overlooks the importance of needing spaces to relax, work, concentrate.

Gavin Olson – Crescent City – Del Norte

- Lack of WiFi Privacy - Students don't feel they have privacy on WiFi. This is very important to students. They spend their meager funds to purchase a VPN subscription.
- Cell Phones & Internet – The coverage is spotty, very difficult to get a signal.
- Library is Closed - Library has been 'under construction' for 2 years, since the beginning of the pandemic. I don't see any construction work. I doubt that it's really under construction. What is the story?

Jack Hill

- WiFi Privacy - WiFi access at Del Norte is a major concern to students. The ASCR has had many discussions about it. The College doesn't seem to believe WiFi privacy is a necessity.

Morgan Beebe - Eureka

- VPN, WiFi – CR's WiFi is highly monitored, not private. Some students buy cheap VPNs that do not provide good value. It would be very helpful if the College could provide a whitelist of VPN services, maybe arrange a student discount.
- Study Space Late Night, Weekends - Often, homework is due at midnight and again on Sunday. It is essential that we have better connectivity and suitable places to study individually and in groups. The Library is not open on weekends.
- Outdoor seating – We have picnic benches outside the cafeteria. There are a few benches in that big area between Humanities & Library. It rains 3 times daily. Seating is not covered in the rain. When the sun comes out it's still wet. We need covered outdoor spaces.
- Water Bottle Stations - We need water bottle stations! Most students carry refillable water bottles.

Jack Hill

- Water bottle stations!

Sharon Diaz, Many Others - Eureka

- No Center of Campus Activity - There is no main place on Eureka to hang out and be involved with the student community. There is no campus quad. There is no center of activity. Everybody is on their own.

Sharon Diaz - Eureka

- Student Resource Center - Sometimes we hang out in cafeteria inside, or outside by the pond. There is a small seating area outside the cafeteria. Friends held my birthday party here. Security let us be because there was nobody else around to bother.
- Leave Campus to Hang Out - We hang out away from campus – there is not much to do here.
- Pond - Sometimes people hang out by the pond.
- Athletic Fields, Track – We like to go to games to be with involved with the student community. we hang out. Also, baseball, track.
- Basketball courts in gym – NO! don't mess the floor.
- No Place for a Walk - There is no place to take a walk. There is an old trail, but it's closed and it's scary.
- Creative Arts – No one hangs there, just go there for class. It's too far from the rest of the campus.
- Science & Humanities - A few people hang in Humanities & Science, some tables are placed here and there.
- Library – No place to mingle with peers.
- Flagpole/Dropoff - This is NOT the heart of campus. It's just a walk-thru place. Faculty and staff see high school students linger there while they wait for the bus or for parents to pick them up. Not College students.

PLACES THAT SAY 'STAY AWAY' (Eureka)

- Creative Arts – too far, long walk, too exposed. Botanical Garden is there, but people don't know, don't care.
- Woods North of the Dorms – There are no trails to use. Doesn't feel safe for a walk.
- Administration of Justice – Feels secluded from the rest of the campus. Only AJ students go there; other people are not aware of it.
- Tennis courts – Nobody knows it's there. They are secluded from the rest of the campus.
- Field House – Not used.

ACTIVE AREAS - Eureka

- Humanities
- Science
- Cafeteria
- Dorms
- Library
- Student Union

PLACES FOR EXERCISE/WELLNESS

Winnifred Carpenter (KT)

- I took a PE class at Eureka. Can you work out there if you're not enrolled in a class?

Sharon Diaz - Eureka

- Yes, you can work out if you're in a class.
- Gym is open Thursday & Sunday to dorm residents.

VACATED BUILDINGS DETRACT FROM CAMPUS IMAGE

- Old, Vacated Buildings - including RBC A&B. Says stay away! Tsunami zone! The elements have overtaken them. It looks apocalyptic, abandoned. It takes away from the campus feeling.

Sharon Diaz - Eureka

- Lots of places are not used.
- PE Building is old & run down because we don't use it. Only athletes and dorm residents use it.
- Some people go to Planet Fitness in town to exercise.
- Please, please do something with old buildings, field house, gym.
- I want to see the campus full of energy and used!!!

PARKING - Eureka

Gavin Olson - Eureka

- When PE and Field House are demolished – add more parking. Parking lots are too distant. My wife has trouble walking, had to arrive 1 hour early to get good parking. She walked 1 mile uphill. Need more disabled parking.

PEDESTRIAN/VEHICLE CONFLICTS? – Eureka

Question: is there a conflict between pedestrians and vehicles on Trustee Boulevard (near Student Services) and on the east side?

- Trustee Blvd – Not really a problem. The only vehicle traffic is headed to and from the dorm & service areas. It's not that much.
- East side – Not much traffic, not a problem.
- Not an issue

SUSTAINABILITY

- It would be great to have solar panels in the parking lots.

NEXT STEPS

There are two big opportunities for students to participate in the Facilities Master Plan

STUDENT SURVEY

Monday 4/25 to Sunday 5/1. CR Students will receive an email invitation to

ASCR meeting – April 25, come back & remind about survey, Stakeholder Workshop

Prepared by:

Amy Jane Frater AICP, LEED AP

tBP/Architecture

Attachment

20220411 ASCR Student Listening ppt

Facilities Master Plan Update
Associated Students of CR
Listening Session
April 11, 2022

1. Planning Themes
2. Campus Voices
3. Heat Mapping
4. Student Survey, Stakeholder Workshop

Key Planning Themes

Era of Change and Opportunity



Create Flexible Learning Environments



Encourage Active Student Life



Technology Everywhere



Enhance Open Spaces



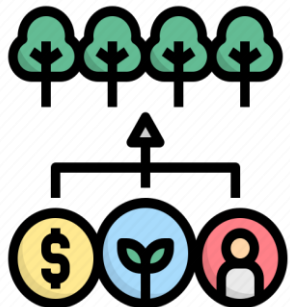
Facilitate Partnership Opportunities



Offer Community Access to Campus



Promote Diversity, Equity and Inclusion



Lead in Sustainability

Campus Voices: Do You Agree with These Comments?

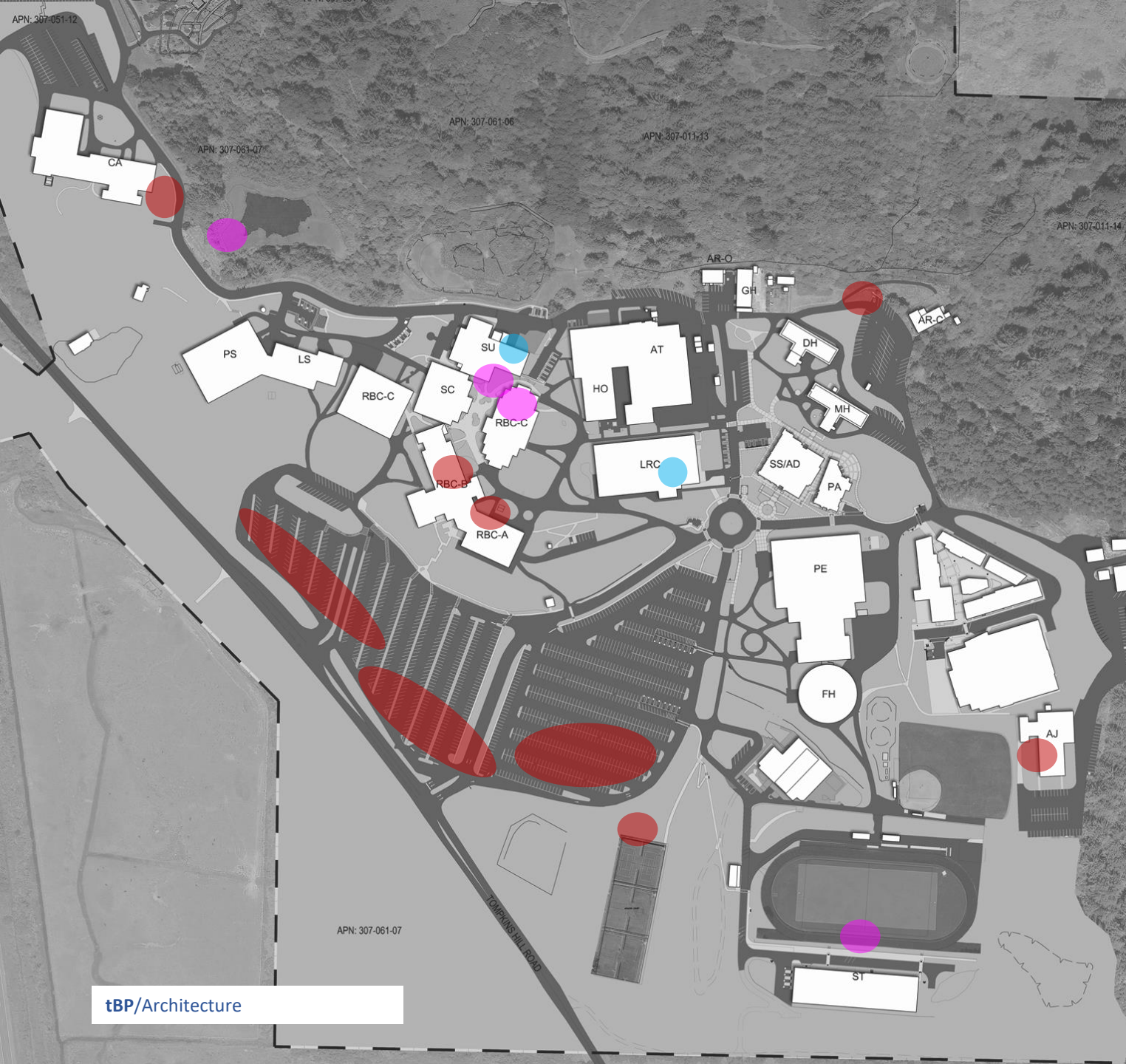
“Students need more places to ‘be’ on campus to study, hang out, have fun, do group activities.”

Better WiFi!
Better WiFi!
Better WiFi!

“Students need more places on campus where they can participate in online meetings.”

“We need better spaces for students to collaborate with each other, faculty and staff.”

“The heart of campus activity is at the drop-off.”

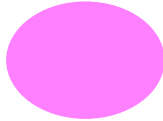


What are your MOST and LEAST favorite places on campus? Why?



In your opinion, where is the heart of the campus?

Why?





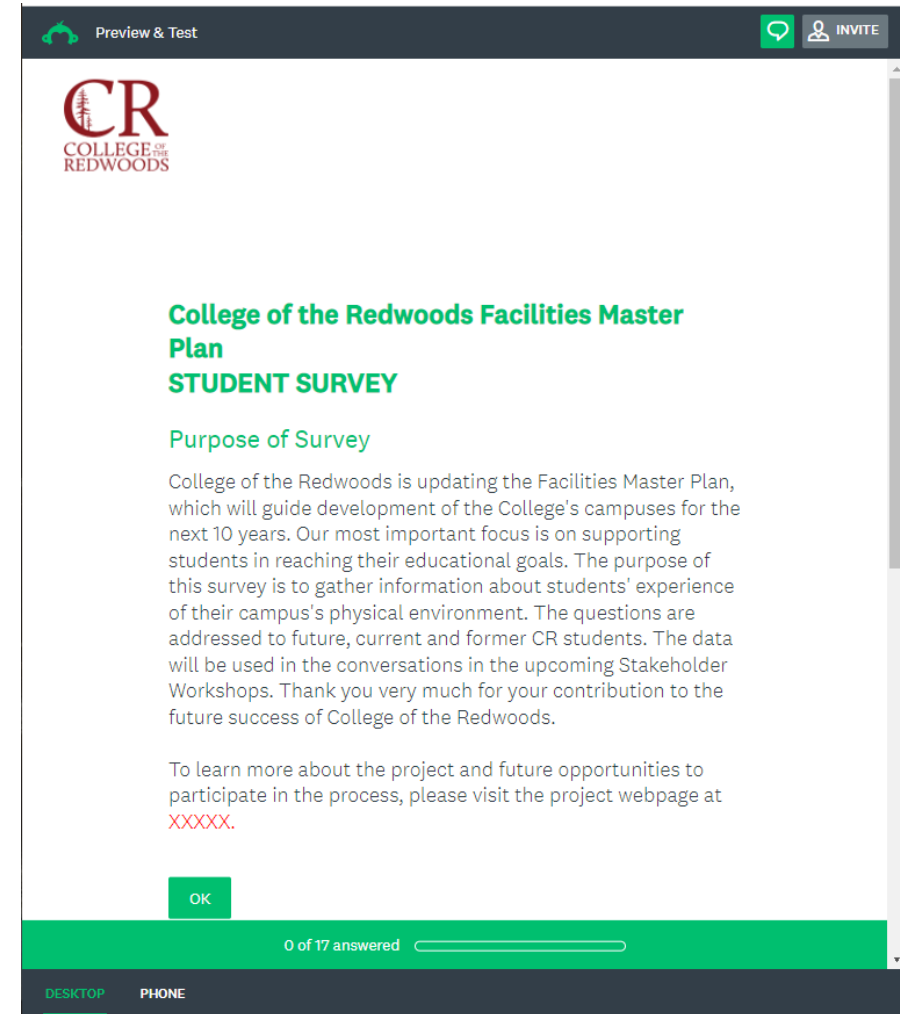
What Does Your Campus NOT HAVE that you need?

Why?

Invite your constituents to take the FMP Student Survey!

CR Students will receive
the email invitation on
Monday, April 25.

The survey will be open
for 1 week.



Stakeholder Workshop

Tuesday, April 26

10 – 11 am

Via Zoom

RSVP

Kevin-Carter@redwoods.edu

